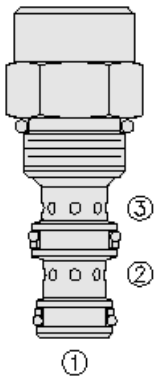




Overview



Description

EC08-32 is a screw-in, cartridge style, load sense, flow on demand, pressure compensator valve.

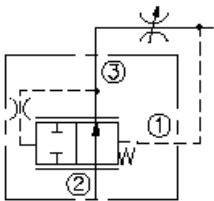
Operation

With inlet flow at port 2, the EC08-32 will deliver required flow at port 3 regardless of load pressure sensed at port 1.

Features

- Range of flow ratings available.
- Hardened parts for long life.
- Several compensation springs available.
- Quiet, modulated response.
- Compact, industry-common cavity.

Symbol



Ratings

Pressure Ratings

Pressure rating	241 bar (3500 psi)
Proof pressure	345 bar (5000 psi)
Burst pressure	1034 bar (15000 psi)

Flow Ratings

Flow rating	5.7 lpm (1.5 gpm)	- Note: With 2.7 bar (40 psi)compensating spring
	11.4 lpm (3.0 gpm)	- Note: With 5.5 bar (80 psi)compensating spring
	19 lpm (5.0 gpm)	- Note: With 10.3 bar (150 psi)compensating spring
	30.3 lpm (8.0 gpm)	- Note: With 17.2 bar (250 psi)compensating spring
Maximum internal leakage	20 ml/min (1.2 in ³ /min)	- Note: At port 1 with pressure at port 2 and port 3 blocked 241 bar (3500 psi)

Temperature Ratings

Operating fluid temperature	-40 to 100 °C (-40 to 212 °F)	- Note: With buna N seals
	-35 to 204 °C (-31 to 400 °F)	- Note: With fluorocarbon seals
Storage temperature	-40 to 70 °C (-40 to 160 °F)	
Ambient temperature	-40 to 70 °C (-40 to 160 °F)	

Other Ratings

Corrosion protection	960 hr salt spray per ASTM b117 (model number - gec08-32)
----------------------	---

Operating Parameters

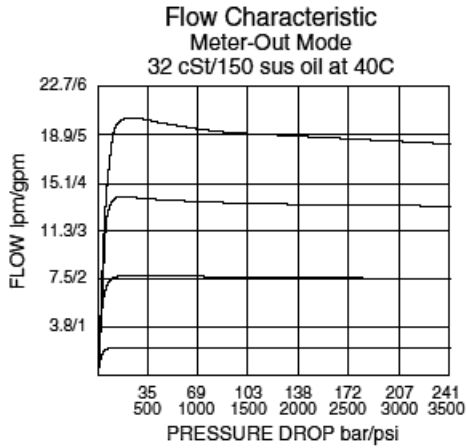
Fluids	Mineral based or synthetic hydraulic fluid with lubricating properties
Fluid viscosity range	7.4 to 420 cSt
Maximum operating contamination level	18/16/13 per ISO 4406

Properties

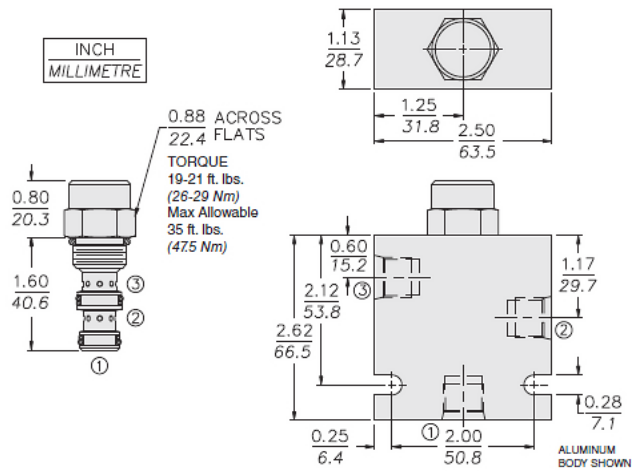
Unit weight	0.1 kg (0.22 lb)
Internal wetted surface area	105 cm ² (16.2 in ²)



Performance



Dimensions



Installation Specifications

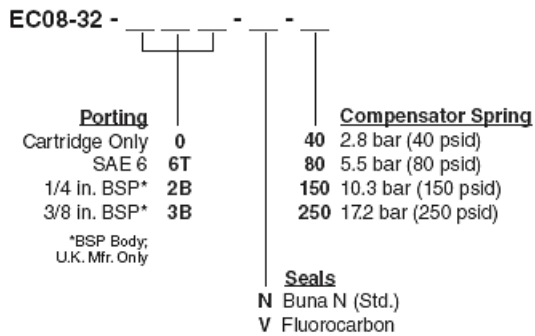
Cavity	VC08-3
Cartridge installation torque	26 to 29 N-m (19 to 21 ft-lb)
Maximum allowable torque	47.5 N-m (35 ft-lb)
Orientation restriction	None

Accessories

Seal kit	SK08-3X-MM	- Note: X = seal option
----------	------------	--------------------------------



Order Code



Model Options

EC08-32-H-J-R

H Line Body

CODE	DESCRIPTION
0	No Body
4T	Aluminum SAE 4
6T	Aluminum SAE 6
6TD	Ductile Iron SAE 6
8TD	Ductile Iron SAE 8
3B	Aluminum BSPP 3/8" (3)
3BD	Ductile Iron BSPP 3/8" (3)

J Seal

CODE	DESCRIPTION
N	Buna-N
V	Fluorocarbon
P	Polyurethane
U	PPDI Urethane

R Compensator Spring

CODE	DESCRIPTION
40	40 Compensator Spring
80	80 Compensator Spring
150	150 Compensator Spring
250	250 Compensator Spring